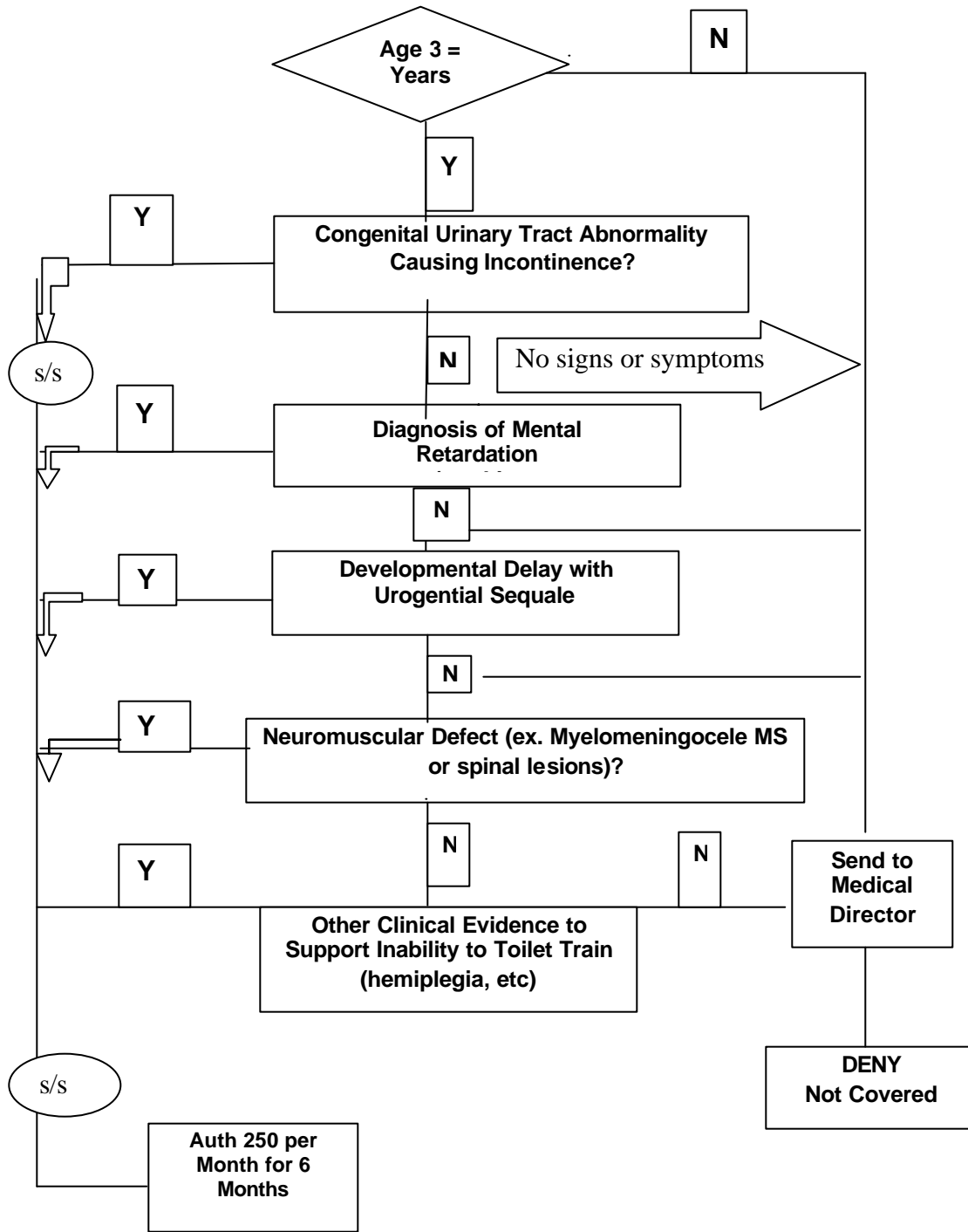


**Adult/Pediatric Incontinence Guidelines
HCPCS A4520 and A4554**



Adult/Pediatric Incontinence Guidelines HCPCS A4520 and A4554

SYMPTOMS OF URINARY DIFFICULTY

PAINFUL URINATION

- Cystourethral Inflammation
- Urethral Stricture
- Psychogenic

INCREASED FREQUENCY – URGENCY

- Increased fluid intake of any cause (e.g. diabetes, alcoholism)
- Cystourethral Inflammation
- Psychogenic
- Partial outlet obstruction (e.g. prostatic hypertrophy)
- Neurogenic
 - Damage to prefrontal or spinal inhibitory pathways.
 - Spinal reflex facilitation

INCONTINENCE

RETENTION-OVERFLOW: Dribbling or small volumes, pain in pelvic, or flanks, palpable bladder

Cause as listed with retention, below.

CONFUSIONAL: Small or large volume, usually shameless

“SPASTIC”: Variable volume, sporadic occurrence, prominent urgency, emptying complete

- Prefrontal lesion

- Extra medullary advance spinal compression

- Occasionally partial outlet obstruction

- Severe cystitis (small bladder volume)

- Circumstance: bedridden or crippled elderly with

facilities remote

INTRASPINAL LESIONS: Moderate volumes, brief urgency, frequent occurrence, high residual urine

Intramedullary cervical–thoracic- lumber lesions (multiple sclerosis, neoplasms, etc.)

RETENTION:

- Acute or chronic outflow obstruction

- Acute neurological disease

PERIPHERAL: Autonomic polyneuropathy, pelvic trauma, caudia equina compression, conus lesions

CENTRAL: poliomyelitis, spinal transaction

DRUG: (usually plus local structural problems) Anticholinergics, antidepressants, opiates

PSYCHOGENIC:

**Adult/Pediatric Incontinence Guidelines
HCPCS A4520 and A4554**

Documentation Requirements:

1. Certificate of Medical Necessity (CMN) – Refer to Chapter 500, DME/Medical Supplies, Manual, Attachment III, for CMN and instructions.

Diagnoses and ICD-9-CM Codes:

Sample diagnoses with documented signs and symptoms of urinary/fecal incontinence are as follows. This list should not be considered all inclusive .

- a) Developmental delay/retardation
- b) Neurogenic bladder due to spinal cord injury, pelvic trauma, neurological illness such as MS or muscular dystrophy, pelvic surgery resulting in pelvic nerve compromise
- c) Congenital anomalies of the urogenital /anorectal system
- d) Pelvic radiation therapy
- e) Dementia
- f) Immobility secondary to para/quadruplegia/stroke
- g) Disease –specify- which results in irreversible loss of control of the urinary bladder and/or anal sphincter
- h) drug-induced
- i) Retention overflow conditions such as bladder outlet obstruction,
- j) Interstitial cystitis
- k) Other possible diagnoses (non-inclusive)
 - Spinal cord compression
 - Autonomic polyneuropathy
 - Cauda equine syndrome
 - Poliomyelitis
 - Myelomeningocele
 - Normal Pressure Hydrocephalus
 - Spinal cord tumor

335.20 - 335.9	Motor neuron disease
340	Multiple sclerosis
342.00 - 342.92	Hemiplegia and hemiparesis
344.00 - 344.09	Quadruplegia and quadriplegia

**Adult/Pediatric Incontinence Guidelines
HCPCS A4520 and A4554**

344.1	Paraplegia
344.30 - 344.32	Monoplegia of lower limb
344.60 - 344.61	Cauda equina syndrome
344.9	Paralysis, unspecified
569.42	Anal or rectal pain
596.51 - 596.59	Other functional disorders of bladder
598.9	Urethral stricture, unspecified
599.81 - 599.83	Other specified disorders of urethra and urinary tract
600.00 - 600.91	Hyperplasia of prostate
618.00 - 618.1	Genital prolapse
728.2	Muscular wasting and disuse atrophy, not elsewhere classified
788.1	Dysuria
788.20 - 788.29	Retention of urine
788.41 - 788.43	Frequency of urination and polyuria
788.61	Other abnormality of urination

154.0 - 154.8	Malignant neoplasm of rectum, recto sigmoid junction, and anus
171.6	Malignant neoplasm of connective and other soft tissue of pelvis
180.0 - 180.9	Malignant neoplasm of cervix uteri
185	Malignant neoplasm of prostate
188.0 - 188.9	Malignant neoplasm of bladder
189.3	Malignant neoplasm of urethra
189.4	Malignant neoplasm of paraurethral glands
197.5	Secondary malignant neoplasm of large intestine and rectum
198.82	Secondary malignant neoplasm of genital organs
233.4	Carcinoma in situ of prostate
235.2	Neoplasm of uncertain behavior of stomach intestines and rectum
236.5	Neoplasm of uncertain behavior of prostate
239.5	Neoplasm of unspecified nature of other genitourinary organs
596.0	Bladder neck obstruction
600.00	Hypertrophy (Benign) of prostate without urinary obstruction
600.01	Hypertrophy (Benign) of prostate with urinary obstruction
600.10	Nodular prostate without urinary obstruction
600.11	Nodular prostate with urinary obstruction
600.20	Benian localized hvoerplasia of prostate without urinary obstruction

**Adult/Pediatric Incontinence Guidelines
HCPCS A4520 and A4554**

600.21	Benign localized hyperplasia of prostate with urinary obstruction
600.3	Cyst of prostate
600.90	Hyperplasia of prostate unspecified without urinary obstruction
600.91	Hyperplasia of prostate unspecified with urinary obstruction
601.0 - 601.9	Inflammatory disease of prostate
602.0 - 602.9	Other disorders of prostate
787.6	Incontinence of feces
998.6	Persistent postoperative fistula not elsewhere classified
V10.05	Personal history of malignant neoplasm of large intestine
V10.06	Personal history of malignant neoplasm of rectum rectosigmoid junction and anus